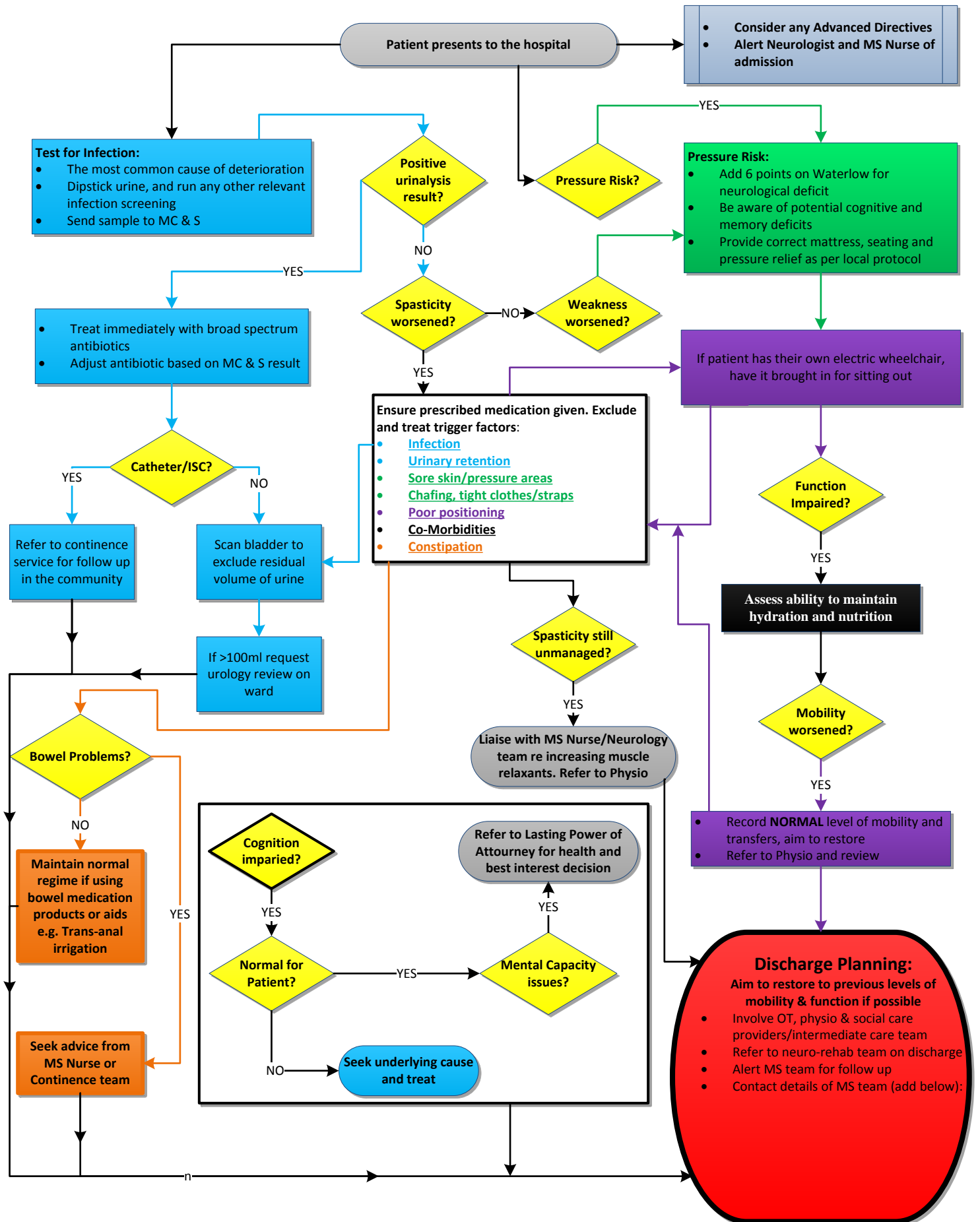


A care pathway for a person with Progressive MS in an acute hospital admission

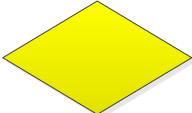


This pathway has been constructed using data provided by Emma Matthews and Miranda Olding of Bedford and Northampton MS Therapy Centre and Northampton NHS Trust. Sanofi Genzyme has not exerted any editorial control over the contents displayed in this document.

Key for flowchart



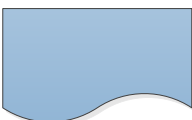
The start or an end of a process



A decision that needs to be made



An action that takes place



Additional information to an action, providing a greater level of depth



Connecting lines to show the direction of the pathway and possible routes that can be taken



Potential addition to the pathway as an improvement